



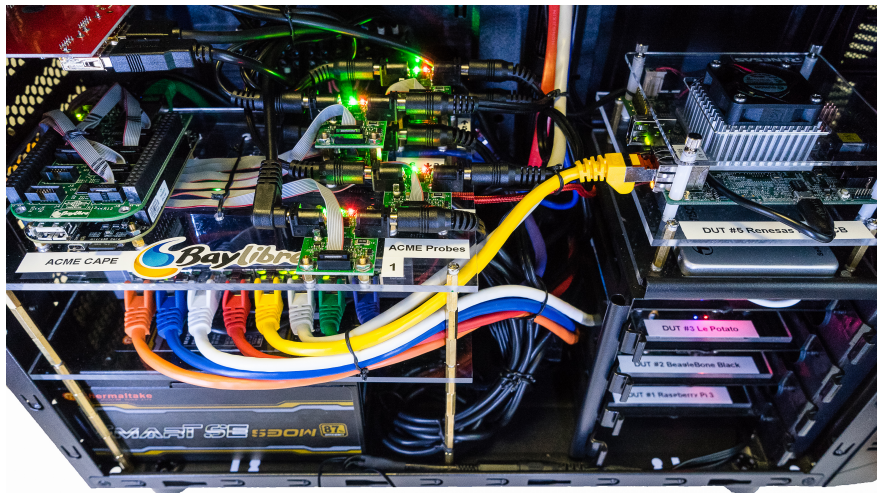
## Lava Box: a Continuous Integration (CI) lab in a box

Patrick Titiano / Kevin Hilman



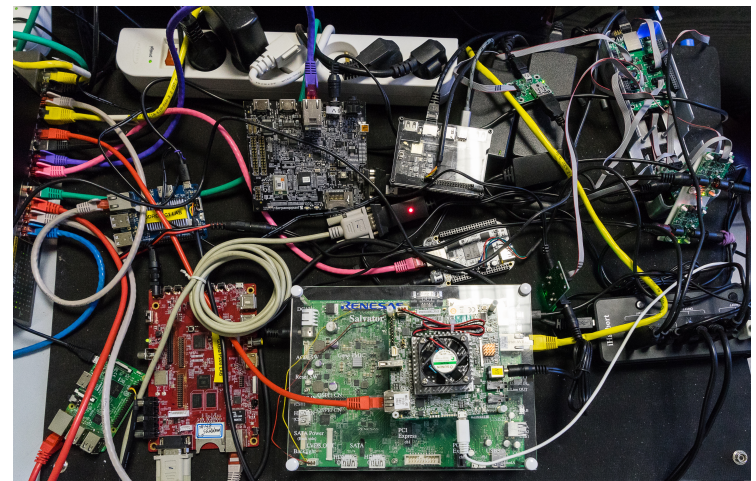
### What is demonstrated

- Complete Turn-key CI LAVA Lab, including:
  - Preconfigured LAVA Master & Slave (dockers)
  - 6 preconfigured DUT (Devices Under Test)
  - Runs AGL / KernelCI / Custom jobs



### What was improved

- Low-cost All-in-One 6-DUT Lab in a single PC case
- Preconfigured LAVA dockers & DUT ready to run KernelCI/AGL jobs
- Easier & safer to maintain



### Hardware Information

Baylibre ACME Cape for power control and measurement  
DUT: Renesas Starter Kit Pro (R-Car M3), SABRELite (NXP i.MX6),  
Le Potato Board (Amlogic S905x), DragonBoard (QCOM 410C),  
Raspberry Pi 3 (Broadcom BCM2837), BeagleBone Black (TI AM335x)

### Source code or detail technical information availability

[www.baylibre.com/acme/](http://www.baylibre.com/acme/)  
[www.kernelci.org](http://www.kernelci.org) [wiki.linaro.org/LAVA](http://wiki.linaro.org/LAVA)  
[www.automotivelinux.org](http://www.automotivelinux.org)